

# Andrés Manuel López Obrador Migratory Policy

What impacts have President  
López Obrador's migratory  
policies created?

By Ana Ruiz, Ethan Tenison, and Raymond Weyandt

## Current Development Initiatives

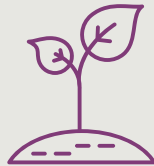
The following are two expanding programs:

### *Sowing Life*

US\$250 monthly payments

Technical training

In-kind assistance to farmers



### *Youth Building a Future*

US\$180 monthly payments

Job training for youth



## Who is López Obrador?

**2000-2005:** Mayor of Mexico City

**2011:** Formed leftist MORENA party

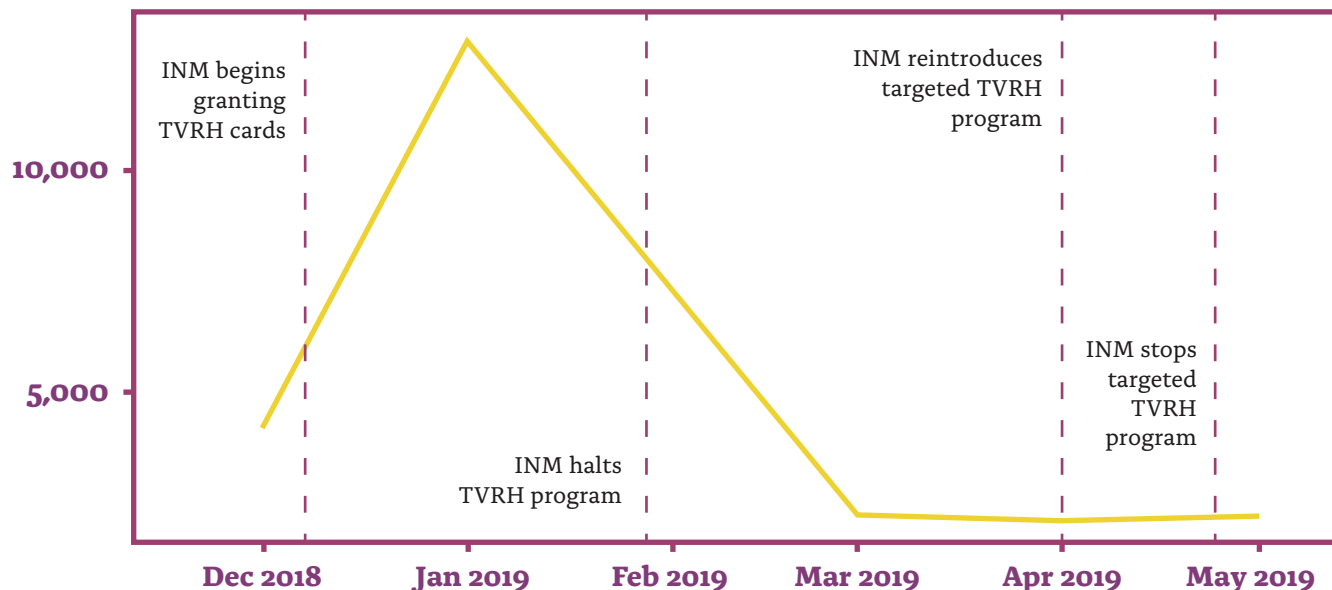
**2017:** Campaigned for presidency on a platform of human rights, safe migration, and countering the United States' influence

## Humanitarian Principles December 2018 to May 2019

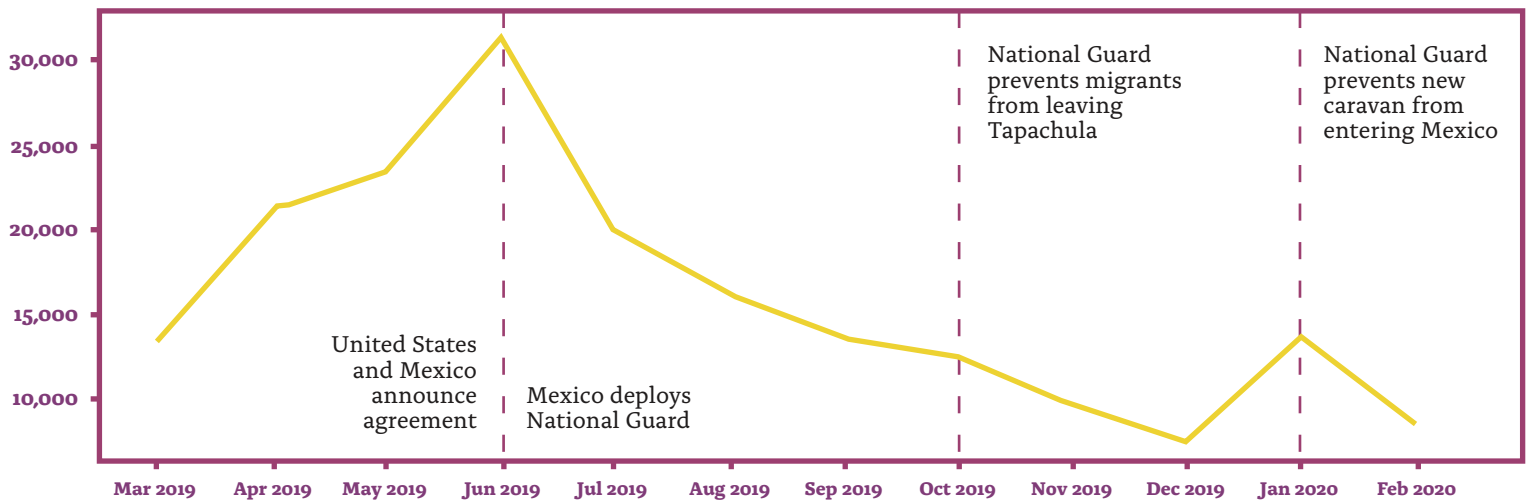
- Respect for migrants' rights
- Safe, orderly, and regular migration
- Regional development funding
- Increased use of humanitarian visas
- More shelters, less detention

The chart below represents the humanitarian visas issued as part of the administration's commitment to humanitarian issues.

## Humanitarian Visas Issued

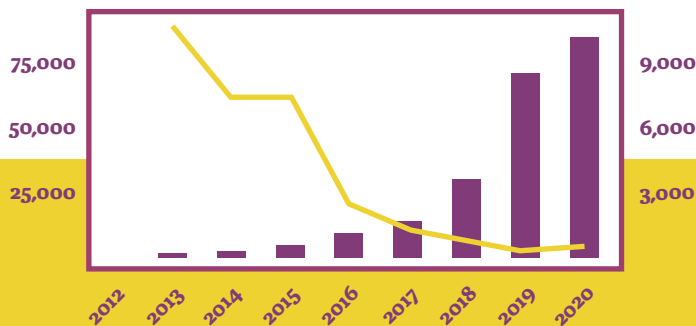


## INM Timeline of Enforcement Shift



The graph above represents the shift from humanitarian to enforcement policies overlaid on INM apprehension data.

## COMAR Funding Per Application and Refugee Applications



## COMAR Overwhelmed

- Funding for refugee agency has not increased at the same rate as refugee applications
- Limited staff and operations
- Absence of integration assistance
- Increased reliance on UNHCR funds

## Policy Effects on Migrants

- Increased crimes against migrants
- Changes in transit routes
- Increased reliance on guides

## Policy Recommendations

- Renew INM's commitment to human rights through trainings, accountability mechanisms, and improved infrastructure
- Improve development projects through funding, partnerships, and evaluation
- Strengthen and expand refugee agency
- Reform National Guard mandate by decreasing immigration enforcement activities and increasing protection for migrants in camps and along transit routes